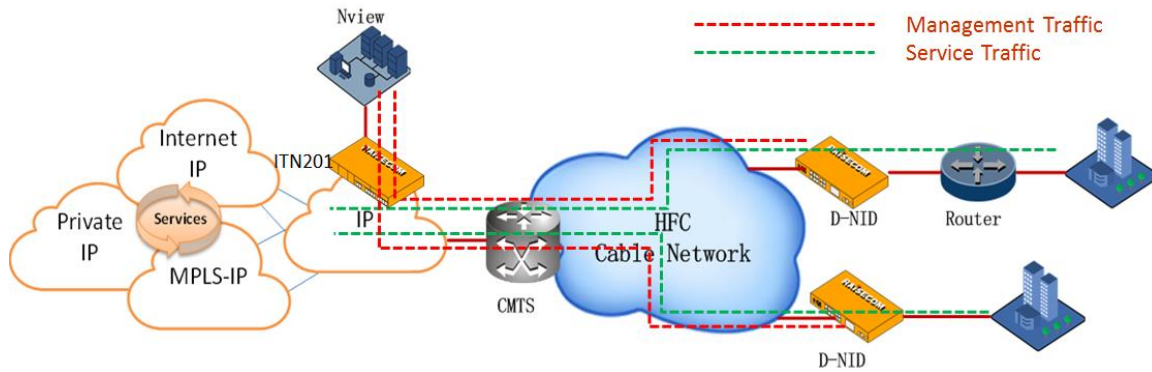




Bonding: up to 4 channels

Application >>



D-NID Application

Large Enterprise, Small/Medium Business services Application

The RAX711-H can work in conjunction with the iTN201 for Large Enterprise, Small/Medium Business services. Its capacity, service-based QoS, and protection mechanism allow “cloud computing” applications, Imaging/video distributions, business data storage/recovery, Layer2-VPNs, etc. Meanwhile, such solutions enable Carrier-grade end-to-end SLA (hardware-based) performance monitoring for Ethernet jitter, frame delay and packet loss, Layer2/3 loopbacks enable service throughput testing and troubleshooting. The RAX711-H enables MEF CE2.0 services over DOCSIS.

Solution Highlight:

1. The RAX711-H combines the Cable Modem and L2 NID to reduce CapEx/OpEx;
2. Carrier-level OAM and SLA help to improve the service quality;
3. Rapid service deployment based on unified network management platform;
4. DOCSIS3.0 is available, HFC BSoD intelligent solution;
5. Compact, Space-saving, power hot-swappable NID device;
6. If necessary, a SOHO router could connect D-NID to extend the solution;

International Headquarters

Raisecom Building, East-11, No.10 Xibeiwang East Road,
Haidian District, Beijing, P.R.China, 100193
Tel: +86 10 8288 3305
Fax: +86 10 8288 3056
www.raisecom.com

U.S.A. Headquarters

Address: 3031 N. Rocky Point Drive West Suite 100
Tampa, Florida 33607 USA
Tel: 1-888-816-4808
Email: sales@raisecominc.com

Raisecom Technology Co., Ltd.

Copyright@1999-2018
All rights reserved
Technical information is subjected to
change without notice



Key Features >>

Switching Mode	<ul style="list-style-type: none">● Store and forward mode;● Supports jumbo frame
Ethernet	<ul style="list-style-type: none">● MTU:12,288 byte● Up to 8k MAC● Support 4,094VLANs (C-tag), stacked VLANs (QinQ, S-tag)● Layer 2 loopback on single and multiple flows● Layer 2 control protocol (L2CP) handling
IP Services	<ul style="list-style-type: none">● DHCP client, option 61● IPv4, Static management routing
Traffic Management	<ul style="list-style-type: none">● Service classification per port/VLAN/CoS(DSCP)/IP Precedence● Support SP, WRR and SP+WRR scheduling modes, and up to 8 queues per port MEF-compliant 3-color policing with color-aware and color-blind mode Bandwidth throttling per port/VLAN/CoS(DSCP), CIR/EIR per flow, automatic calculation of CBS,PBS base on CIR,PIR under CBS,PBS not configured
Security	<ul style="list-style-type: none">● ACL based on VLAN, CoS, MAC, EtherType, IPv4, or user-define● RADIUS, TACACS+● Storm control (broadcast, multicast, DLF)
Reliability	<ul style="list-style-type: none">● Link aggregation group (LAG)● Interface backup● ITU-T G.8031 Ethernet link protection switching (ELPS) and G.8032 Ethernet ring protection switching (ERPS) with the automatic protection switchover time less than 50ms● Port/VLAN-based Ethernet local loop detection● Fault propagation● AC&DC dual-feed power supplies
Ethernet OAM	<ul style="list-style-type: none">● IEEE 802.3ah EFM-OAM link management● IEEE 802.1ag connectivity fault management (CFM) with 3.3ms CCM resolution● ITU-T Y.1731 performance monitoring (PM)● Hardware-based frame delay (FD) measurement● Y.1564● TWAMP-Light● Hardware-based SLA KPIs per port or EVC, which include throughput, delay, jitter, packet loss and availability● Dying gasp message in case of power failure
Auto-Provisioning	<ul style="list-style-type: none">● Auto-establishment of management tunnels across L2/L3 networks
System Management	<ul style="list-style-type: none">● Remote management via SNMP v1/v2/v3, Telnet and SSH v1/v2● Local management via console interface● MEF 36 compliant MIB● KeepAlive, RMON, LLDP, Syslog● Port/VLAN/CoS-based statistics

International Headquarters

Raisecom Building, East-11, No.10 Xibeiwang East Road,
Haidian District, Beijing, P.R.China, 100193
Tel: +86 10 8288 3305
Fax: +86 10 8288 3056
www.raisecom.com

U.S.A. Headquarters

Address: 3031 N. Rocky Point Drive West Suite 100
Tampa, Florida 33607 USA
Tel: 1-888-816-4808
Email: sales@raisecominc.com

Raisecom Technology Co., Ltd.

Copyright@1999-2018
All rights reserved
Technical information is subjected to
change without notice



- SFP digital diagnostic management (DDM)
- temperature and CPU monitoring
- Voltage and temperature monitoring
- Dual system

Fault Propagation

- From line to client interface fault propagation (user configurable);
- Client interface fault propagation

Specifications >>

Performance	Switching fabric: 8Gbps;
Physical Interface	Management port: 1 console (USB); 1 out band SNMP(RJ45) Client interfaces:4 x GE RJ45 Network interfaces:1 x Coax interface
Power Specs	100/240V AC, -36 to -72V DC 24V DC Full load:≤25W
User Conditions	Operating temperature: -10~50°C ; Storage temperature: -25~70 °C ; Humidity: 10~90% non-condensing
Dimensions	220(W)mm x 180(D)mm x 43.6(H)mm

Compliances >>

Standards & protocols	IEEE802.3,802.3u IEEE802.3ad Link Aggregation IEEE802.1p,802.1Q VLAN IEEE802.1ad QinQ IEEE802.3ah OAM IEEE802.1ag CFM ITU-T Y.1731 Services OAM ITU-T G.8031 ELPS ITU-T G.8032 ERPS SNMPv1/v2c/v3 CE certified ,UL RoHS compliance EMI Class A MEF6,8,9,10,11,13,14,16,17,20,31,36 MEF CE2.0-compliance DOCSIS/EuroDOCSIS 3.0,2.0,1.1,1.0
----------------------------------	--

	DOCSIS®	EURODOCSIS™
RF DOWNSTREAM		
Operating Frequency Range (center)	111 to 999 MHz	112 to 1002MHz
Tuner Frequency Range	Edge-to-edge 54-1002, 85-1002, 108-1002 MHz	108 to 1002MHz
Tuner	Full band capture frontend with 8 fully independent digital tuners	
Demodulation	8 demodulators, 64 QAM or 256 QAM	
Maximum Raw Data Rate	8 downstream channels, each 6 MHz channel: 42.88 Mbps for 256 QAM and 30.34 Mbps for 64 QAM	8 downstream channels, each 8 MHz channel: 55.62 Mbps for 256 QAM and 41.71 Mbps for 64 QAM
Bandwidth per Channel	6MHz	8MHz
Operating Level Range	-15 to +15dBmV	+43 to +73 dBμV for 64 QAM

International Headquarters

Raisecom Building, East-11, No.10 Xibeiwang East Road,
Haidian District, Beijing, P.R.China, 100193
Tel: +86 10 8288 3305
Fax: +86 10 8288 3056
www.raisecom.com

U.S.A. Headquarters

Address: 3031 N. Rocky Point Drive West Suite 100
Tampa, Florida 33607 USA
Tel: 1-888-816-4808
Email: sales@raisecominc.com

Raisecom Technology Co., Ltd.

Copyright@1999-2018
All rights reserved
Technical information is subjected to
change without notice



		+47 to +77 dBμV for 256 QAM
Input Impedance	75 ohms	
RF UPSTREAM		
Operating Frequency Range (edge-edge)	5 to 42 MHz, 5 to 65 MHz, or 5 to 85 MHz	5 to 65 MHz, or 5 to 85 MHz
Upstream Transmission	4 upstream channels	
Modulation	QPSK, 8 QAM, 16 QAM, 32 QAM, 64 QAM at ATDMA Mode QPSK, 8 QAM, 16 QAM, 32 QAM, 64 QAM, 128 QAM at SCDMA mode	QPSK, 8 QAM, 16 QAM, 32 QAM, 64 QAM at ATDMA Mode QPSK, 8 QAM, 16 QAM, 32 QAM, 64 QAM, 128 QAM at SCDMA mode
Maximum Data Rate per channel	Chnl Width (MHz) Raw Data Rate (Mb/s)	Chnl Width (MHz) Raw Data Rate (Mb/s)
Modulation		
	QPSK	1.6 2.56
	16 QAM	1.6 5.12
	QPSK	3.2 5.12
	16 QAM	3.2 10.24
	32 QAM	3.2 12.8
	8 QAM	6.4 15.4
	16 QAM	6.4 20.5
	32 QAM	6.4 25.6
	64 QAM	6.4 30.72
RF	Female "F" type	

Ordering Information >>

RAX711-H-4GE-X

4 RJ45 interfaces, X = Pluggable 1:1 Hot-swappable dual redundant power - AC and/ or DC

International Headquarters

Raisecom Building, East-11, No.10 Xibeiwang East Road,
Haidian District, Beijing, P.R.China, 100193

Tel: +86 10 8288 3305

Fax: +86 10 8288 3056

www.raisecom.com

U.S.A. Headquarters

Address: 3031 N. Rocky Point Drive West Suite 100
Tampa, Florida 33607 USA

Tel: 1-888-816-4808

Email: sales@raisecominc.com

Raisecom Technology Co., Ltd.

Copyright©1999-2018

All rights reserved

Technical information is subjected to
change without notice